



LMP Module and Controller Update Instructions from Fresco™ Touchscreen

Summary

Fresco Touchscreens are capable of updating the LMP Panels (LMP Module and LMP Controller) firmware from the RDM tab. The methodology used is very similar to the existing methodology used to update the Fresco RB and Fresco AVIs from the FCN tab.

Instructions

- Update the Fresco Touchscreen and Fresco Studio firmware and software to the latest version.
(Fresco firmware of 201.31.2 or greater is required).
- Connect the LMP Panel to Fresco via DMX like normal.
- Go to the RDM Tab. It should auto discover the connected LMP modules and controllers (Figure 01).
- If the LMP Controller is on firmware version FR07V129 or earlier, you must first update the LMP Controller and then once the LMP Controller is on firmware FR07V130 or later you can update the LMP Modules.**
- Select the LMP controller or LMP module to update and then hit the update button (Figure 02).
- Next, select the firmware file to update to (Figure 03).

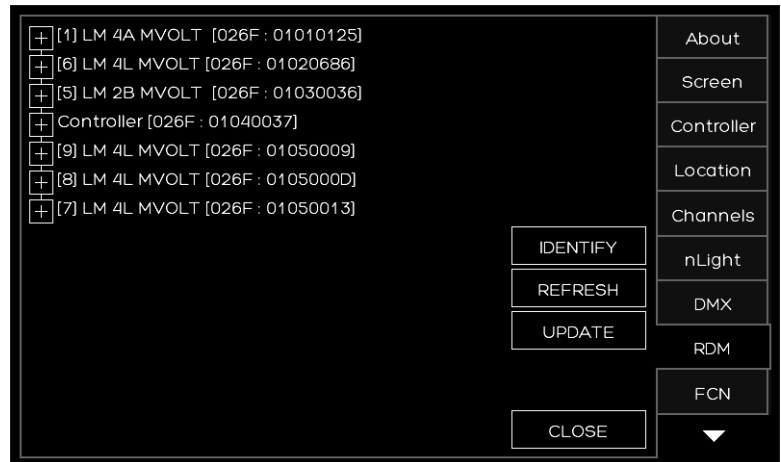


Figure 01

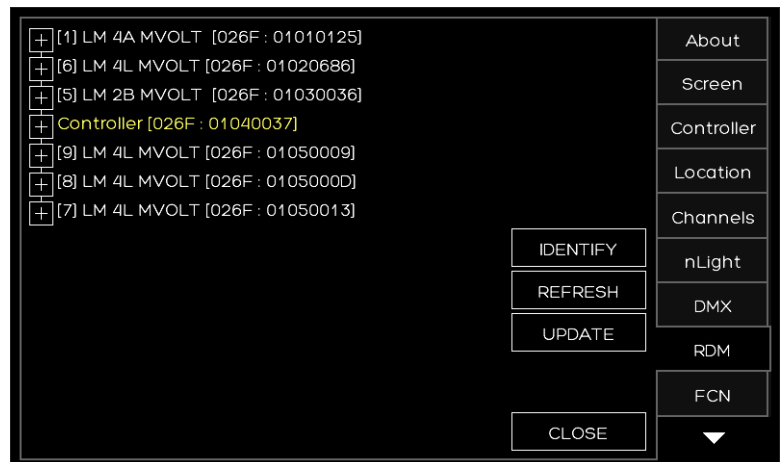


Figure 02

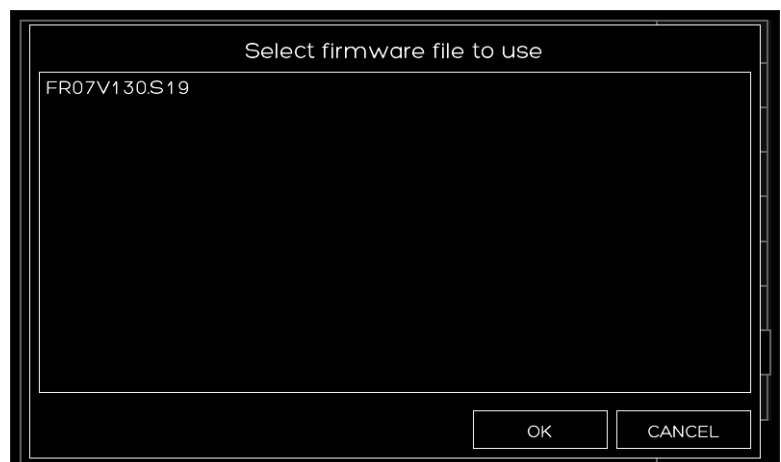


Figure 03

Instructions - cont'd

- The firmware will update the Loader (Figure 04) and Application (Figure 05) on the selected device.
- Repeat the previous step for all LMP Modules and LMP Controller to update.

NOTE

The LMP Tool in Fresco Studio only updates the LMP Modules' application code. However, a bug was introduced in LMP Modules' firmware version FRxxV150.xx in the loader code (which cannot be updated with the LMP Tool). That bug makes updates fail with the LMP Tool. For this reason, the Fresco Touchscreen is the only device capable of upgrading devices that have firmware FRxxV150.xx loaded since it first updates the loader (which fixes the loader bug) and then updates the application with the new recently programmed loaded.

The reason the LMP Controller has to be updated prior to the LMP Modules is that the new LMP Controller firmware prior to FR07V130 did not support updating LMP Modules over RDM.

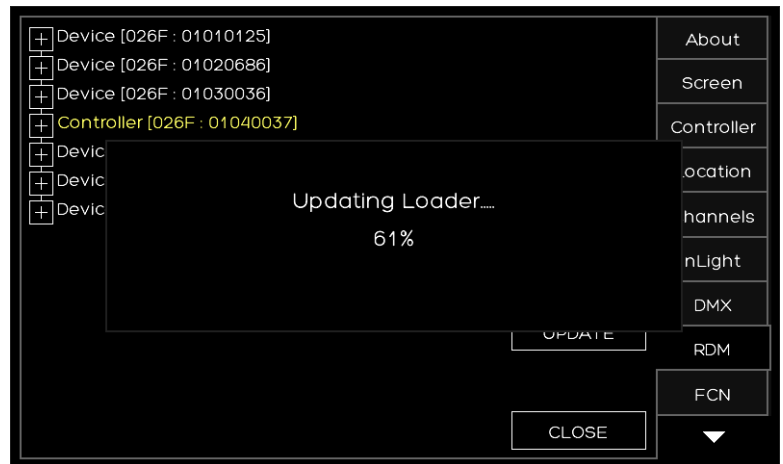


Figure 04

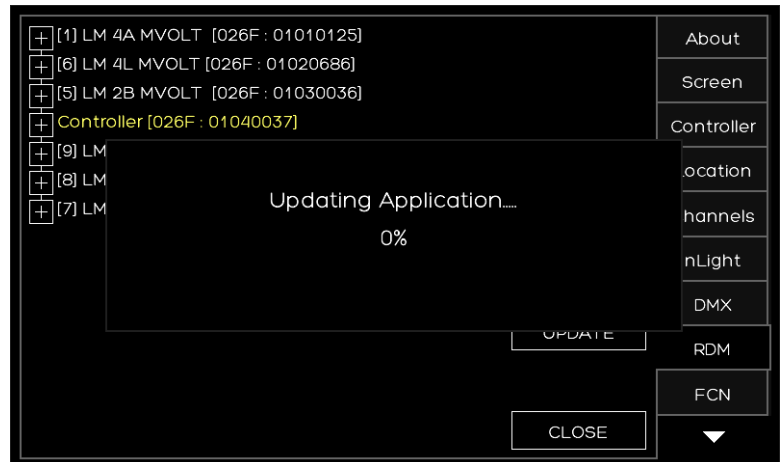


Figure 05